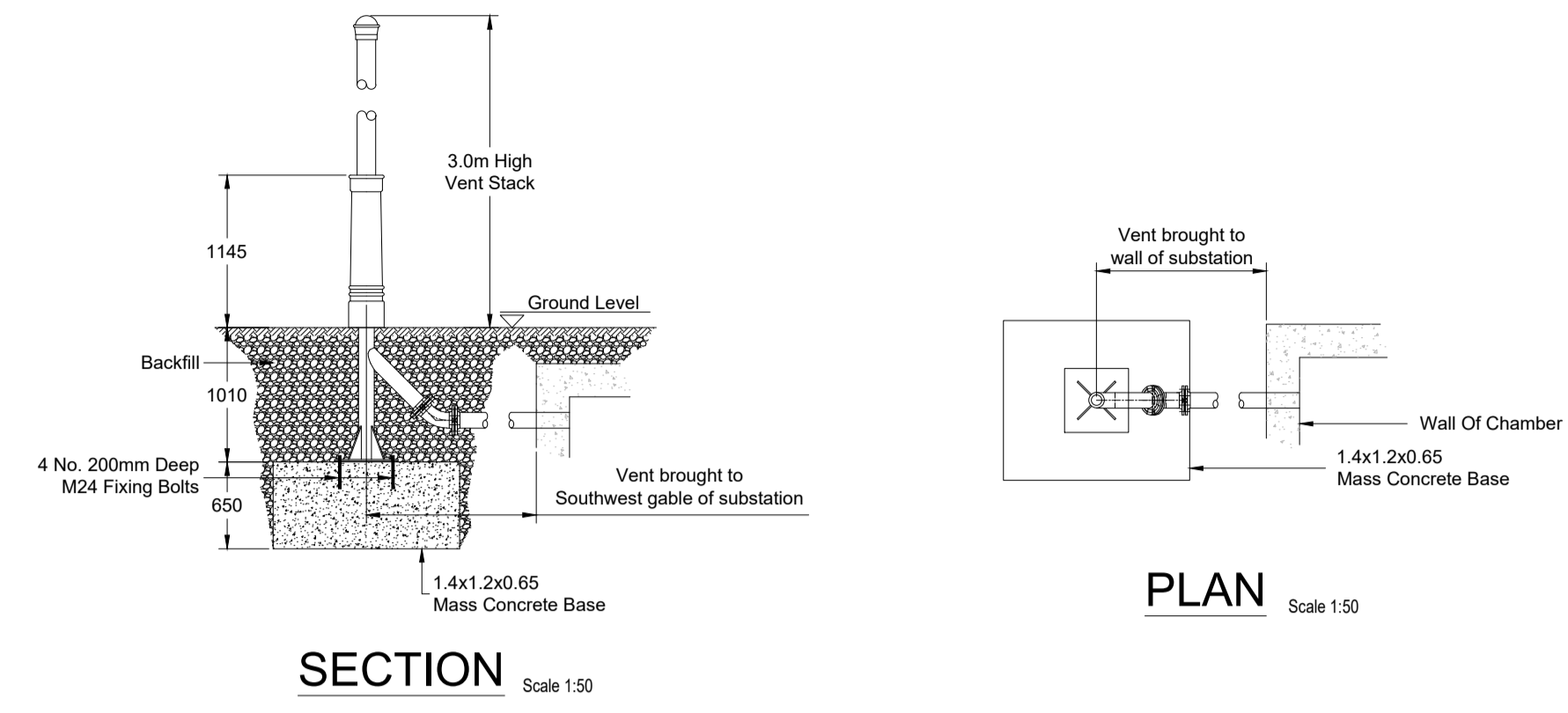
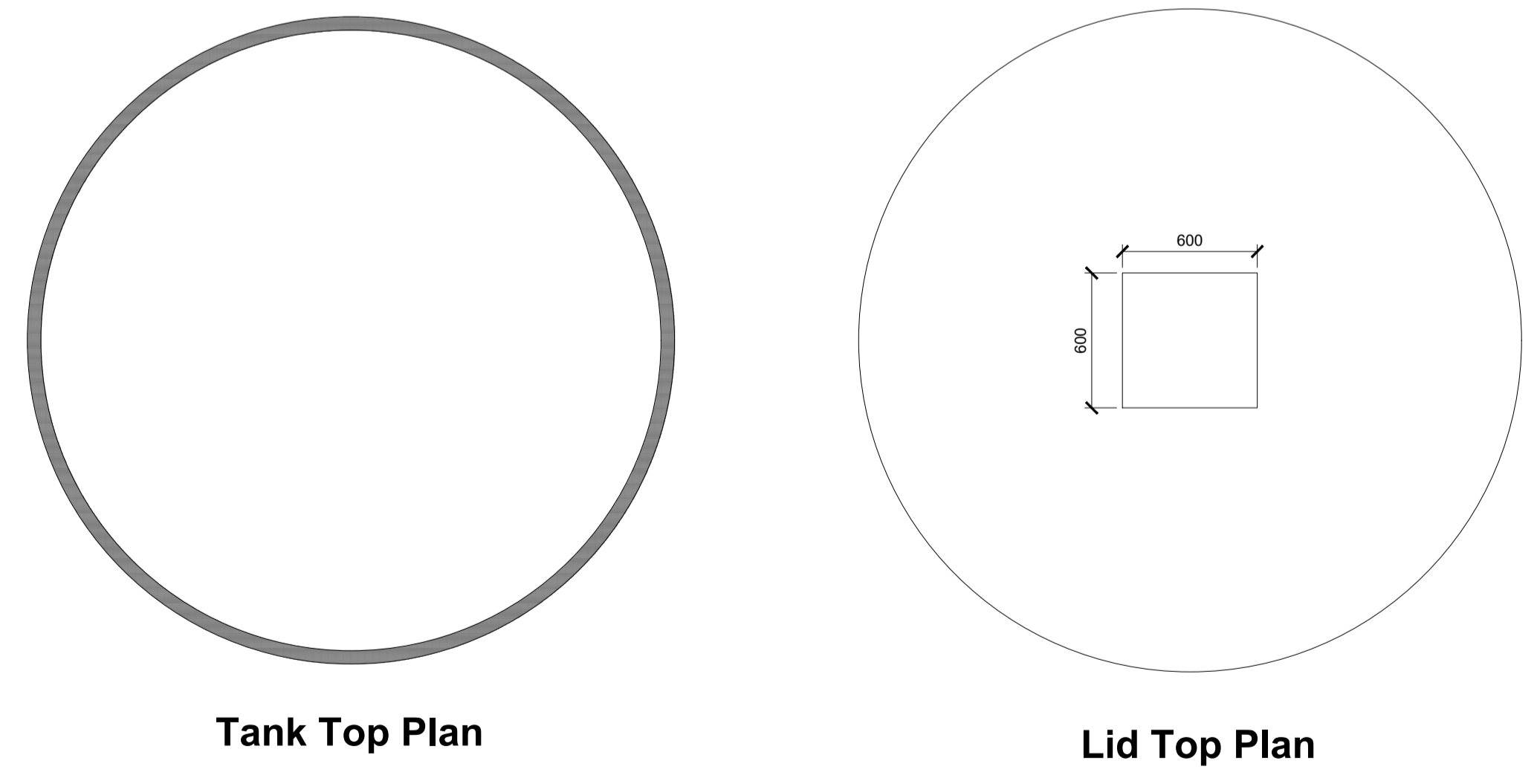
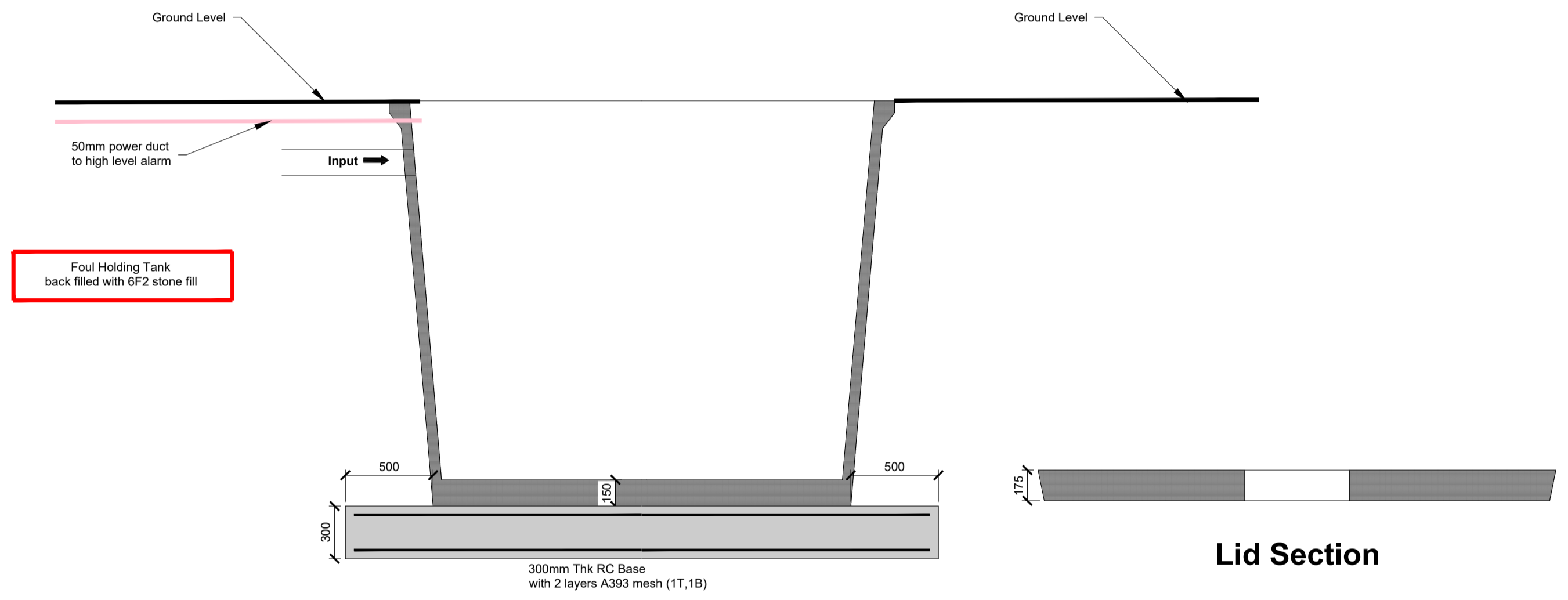


**Notes :**

1. All drawings are to be read in conjunction with all relevant Specifications, Bills of Quantities, Architectural, Services and Engineering drawings.
2. Any discrepancies between these documents shall be brought to the attention of the Engineer.
3. All dimensions are in millimetres, unless noted otherwise.
4. All levels are in metres related to Ordnance Datum.
5. Drawings are not to be scaled.

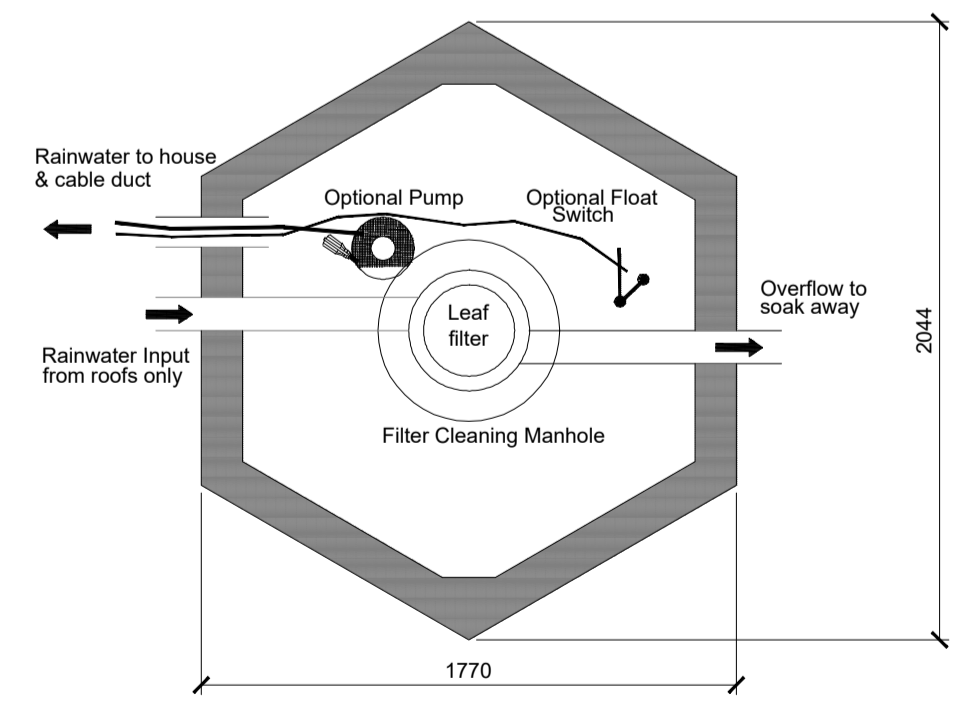
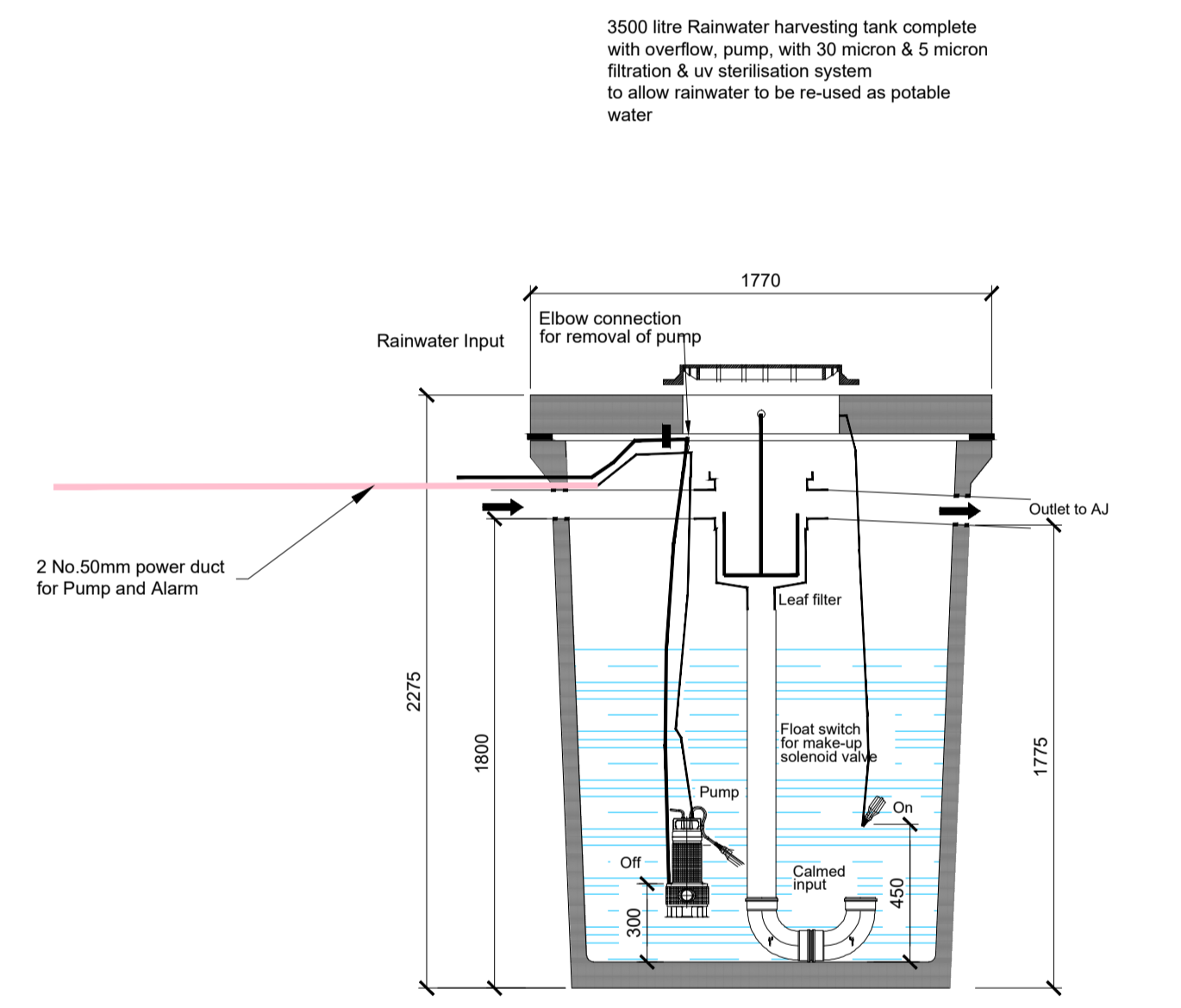


**VENT STACK DETAIL**



**FOUL SEWER HOLDING TANK (Volume 5m<sup>3</sup>)**

Scale 1:25



**Rainwater Harvesting - H+ Tank (3,500 Litres)**

Scale 1:25

Rev.	Date	Description	by	chk'd	app
A	03.07.2020	Issued For Planning	JK	CM	HBR

Project: Carrowagowan Wind Farm

Title: Substation Compound Foul Holding Tank & Rainwater Harvesting Tank Details

Client: COILLTE

**Malachy Walsh and Partners**  
 Consulting Engineers  
 Cork | Tralee | London | Limerick

Reen Point, Blennerville, Tralee, Co. Kerry  
 Tel: +353 (0)66 7123404  
 Fax: +353 (0)66 7126586  
 E-mail: tralee@mwp.ie

Drawn	Ch'd (DO)	Ch'd (Eng)	Approved	As Shown	Drg. No.	Rev.
NT	JK	CM	Jol	18.11.2019	19107-5054	A